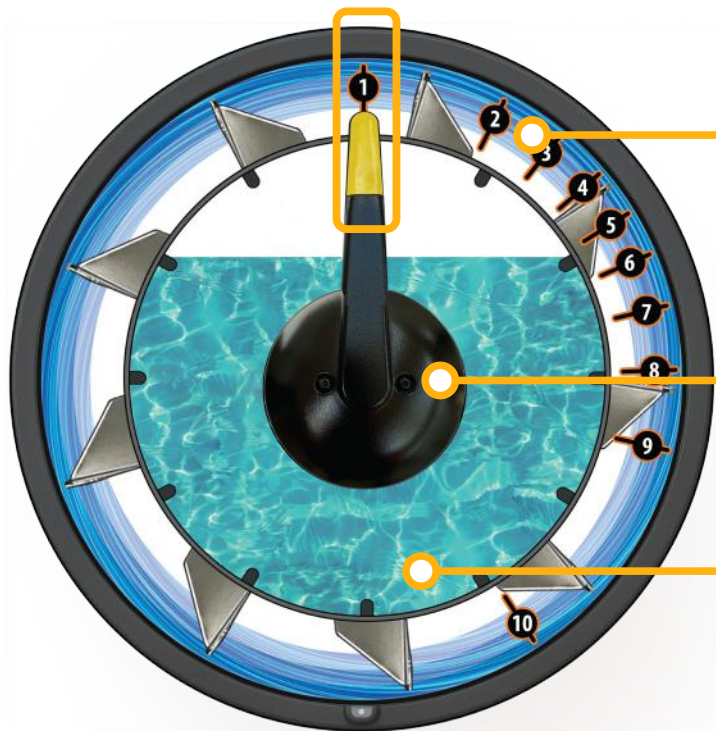


How the Patented Twin Tank Works

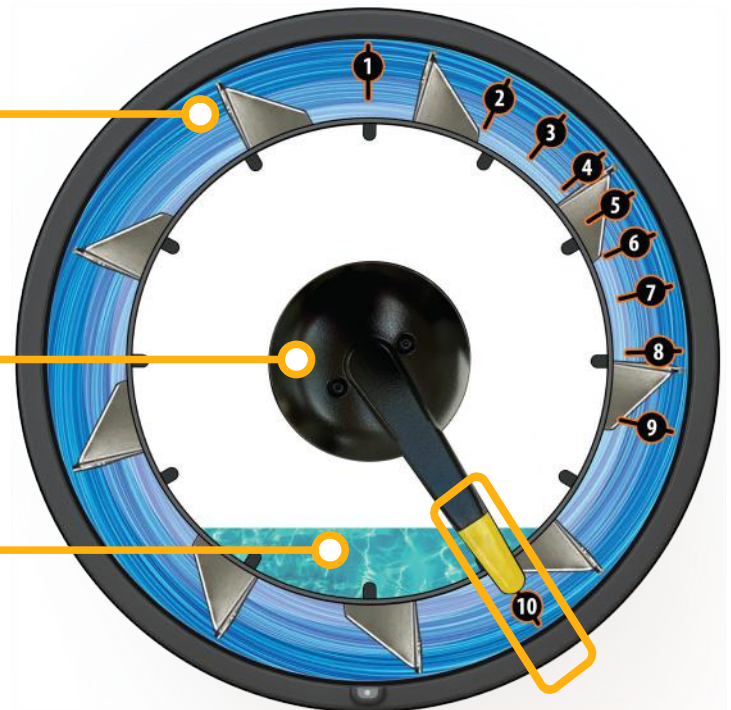


LEVEL ONE - MINIMUM



LOW RESISTANCE
Low level of fluid in the Active Resistance Tank
& High level in the Passive Holding Tank

LEVEL TEN - MAXIMUM



HIGH RESISTANCE
High level of fluid in the Active Resistance Tank
& Low level in the Passive Holding Tank

ACTIVE RESISTANCE
Fluid in the outer tank

ADJUSTMENT LEVER

Fluid in the inner tank
PASSIVE HOLDING

